



AccessAble
Your Accessibility Guide

The new name for DisabledGo

Woburn Square Garden

The University of London, Woburn Square , London, WC1H 0NS

020 7862 8360 (tel:020 7862 8360)

Visit website (<https://london.ac.uk/>)



Access Guide

Introduction

- Services / facilities within the grounds include the large open space including seating, a pavilion and a children's play area.

Getting Here

By Road

[View](#)

- Exit the M1 at junction 1 onto the North Circular road, follow until the Brent Cross interchange and turn right here onto the A41. Follow the A41 road to the end and then turn right onto the Finchley Road. Following the A41 still, the road will become the B525, continue to the end of the road and turn left onto the Outer Circle, then turn left onto Gloucester Gate and then right onto

Albany Street. Follow this road till you reach the A501. Take the first exit onto the A400. Follow this road to find the building.

- There is on street parking available around the area, most of which is pay and display or for residents only. There is building parking for Senate House.

By Bus

[View](#)

- The nearest bus stop is Torrington Place which serves routes 14, 24, 29, 73, 134, 390, N5, N20, N29, N73, N253 and N279.

By Train

[View](#)

- The nearest train station is Euston. This is approximately a 10 minute walk away.

By Underground

[View](#)

- The nearest underground station is Goodge Street which is on the Northern Line. This is approximately a 5 minute walk away. Russell Square Underground Station is approximately 9 minutes away and is located on the Piccadilly Line.

Useful Information

- [To see more information on Student Advice Centre please click here \(opens new tab\)](https://london.ac.uk/ways-study/study-campus-london/student-services-and-support) (<https://london.ac.uk/ways-study/study-campus-london/student-services-and-support>).
- Telephone Number: +44 (0)20 7862 8360.
- Offices for the Student Advice Centre are located in Senate House and Stewart House.
- [To see more information on Housing Services please click here \(opens new tab\)](https://housing.london.ac.uk/) (<https://housing.london.ac.uk/>).
- Telephone Number: +44 (0)20 7862 8880.
- Email: housing@london.ac.uk.

Building Parking

Photos



1



2



3



4



5



6

-
- The building does have its own dedicated parking.

Building Car Park

View

- The car park can be used by permit holders.
- There are no parking charges that apply on the day.
- The car park is located in front of the building.
- The car park type is open air/surface.
- The car park does not have a height restriction barrier.
- Designated Blue Badge parking bays are available.
- There is/are 2 designated parking bay(s) within the car park.
- The Blue Badge bay(s) is/are clearly marked.
- The dimensions of the designated parking bay(s) are 350cm x 500cm (11ft 6in x 16ft 5in).
- The dimensions of the designated bays do vary in size.
- Parking spaces for Blue Badge holders do not need to be booked in advance.
- The nearest designated bay is 15m (16yd 1ft) from the accessible entrance.

- The route from the car park to the building is accessible to a wheelchair user with assistance.
- Assistance may be required because there is / are slopes/ramps.
- The dropped kerb between the car park and the building does not have tactile paving.
- The car park surface is tarmac.
- Clearly signed and/or standard marked parking bays are available.
- The on street standard parking bay(s) is/are located on Gordon Square.

Drop Off Point

[View](#)

- There is not a designated drop off point.

Outside Access (Gordon Square)



Photos



1

Entrance

[View](#)

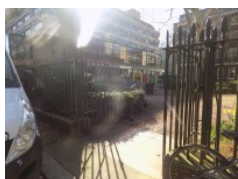
- This information is for the entrance located off Gordon Square.
- There is step free access at this entrance.
- There is not a bell/buzzer.
- There is not an intercom.
- There is not a canopy or recess which provides weather protection at this entrance.
- The main door(s) open(s) away from you (push).

- The door(s) is / are double.
- The door(s) is / are permanently held open (at the time of the survey).
- The width of the door opening is 214cm (7ft).

Outside Access (Woburn Square)



Photos



1



2

Entrance

View

- This information is for the entrance located off Woburn Square.
- There is ramped/sloped access at this entrance.
- There is not a bell/buzzer.
- There is not an intercom.
- There is not a canopy or recess which provides weather protection at this entrance.
- The main door(s) open(s) away from you (push).
- The door(s) is / are double.
- The door(s) is / are permanently held open (at the time of the survey).
- The width of the door opening is 214cm (7ft).

Ramp/Slope

View

- There is a ramp/slope at this entrance.
- The ramp/slope is located in front of the entrance.
- The ramp/slope gradient is slight.

Outside Access (Senate House)



Photos



1



2

Entrance

View

- This information is for the entrance located near to Senate House.
- There is ramped/sloped access at this entrance.
- There is not a bell/buzzer.
- There is not an intercom.
- There is not a canopy or recess which provides weather protection at this entrance.
- The main door(s) open(s) away from you (push).
- The door(s) is / are double.
- The door(s) is / are permanently held open (at the time of the survey).
- The width of the door opening is 214cm (7ft).

Ramp/Slope

View

- There is a ramp/slope at this entrance.
- The ramp/slope is located in front of the entrance.
- The ramp/slope gradient is slight.

Woburn Square



Photos



1



2



3



4



5



6

- There are paths around the park.
- There are benches around the square.

Pavilion



Photos



1



2



3

- The pavilion has seating with no armrests available.
- There is a shallow step to access the pavilion.

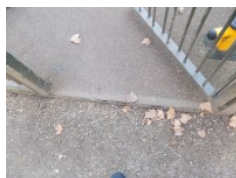
Children's Play Area



Photos



1



2



3



4

- The play area is located in the Woburn Square.
- There is a heavy gate with a width of 90cm to access the play area.
- There is a 3cm threshold at the base of the gate.
- There are benches with armchairs available in the play area.